



Figure 7-3  
Ecological Sensitivities - - Fossitt Map, Bat Findings,  
Mammal Constraints and Breeding Bird Activity







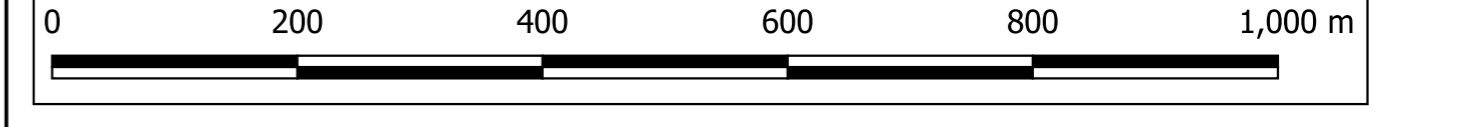
Basemap © OpenStreetMap contributors

Project Name:  
GAS TO BORD NA MONA, EDENDERRY

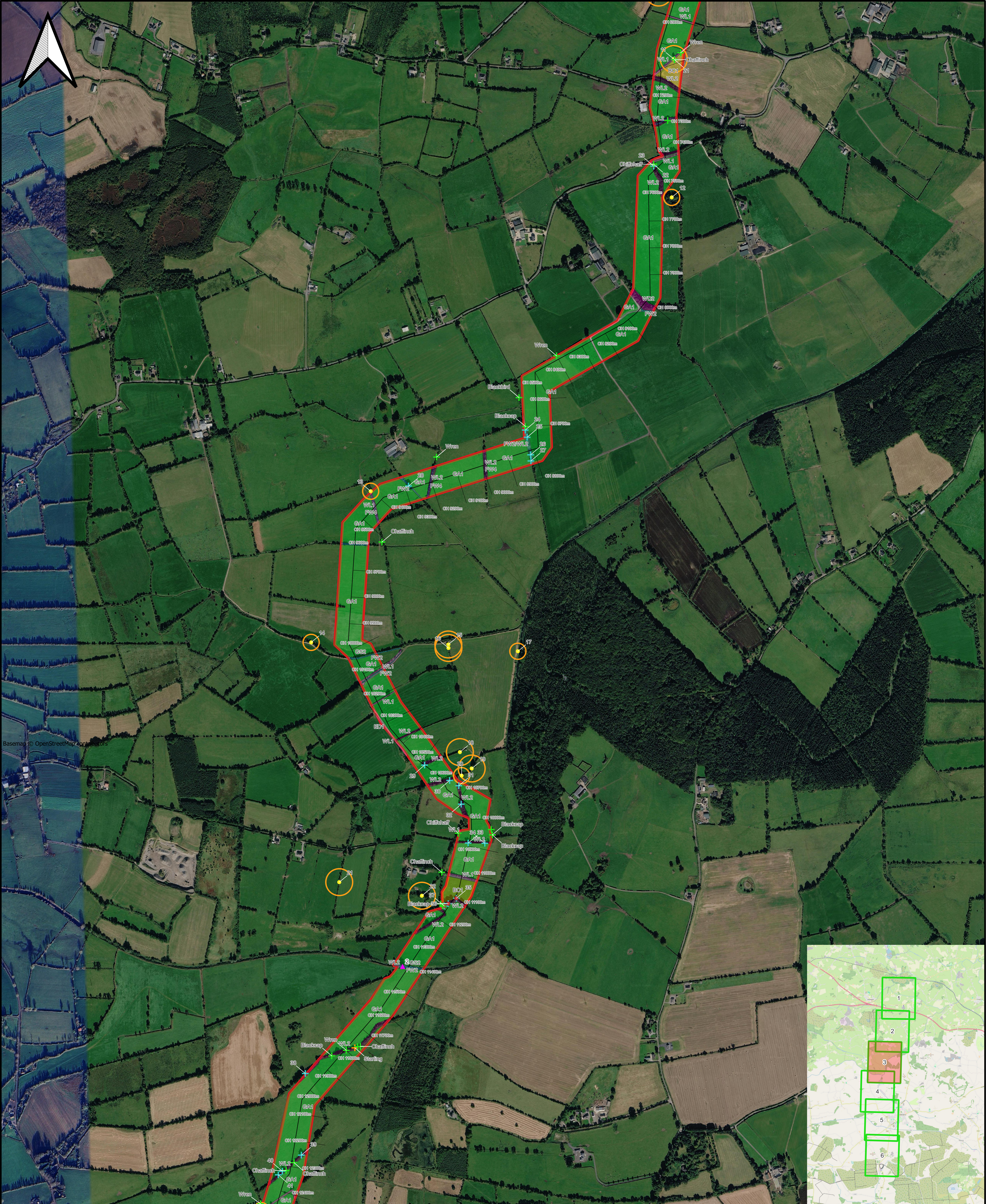
Drawing Title:  
SENSITIVE ECOLOGICAL RECEPTORS IDENTIFIED DURING  
ECOLOGY SURVEYS  
SHEET 2 of 6

Legend	
<span style="border: 2px solid red; padding: 2px;"> </span> Proposed Development Site	<span style="color: yellow;">+</span> Moderate
<span style="color: yellow;">●</span> Active badger setts	<span style="color: purple;">▲</span> Static bat detector locations
<span style="color: green;">+</span> Breeding bird evidence (BoCCI): Green	<span style="color: orange;">+</span> Breeding bird evidence (BoCCI): Amber
<span style="color: blue;">+</span> Breeding bird evidence (BoCCI): Blue	<span style="color: lightblue;">+</span> Trees of bat roosting potential: Low
<span style="border-bottom: 1px solid black; width: 20px; display: inline-block;"></span> Proposed Pipeline Route	<span style="background-color: lightblue; width: 10px; height: 10px; display: inline-block;"></span> Fossitt: BC1
<span style="background-color: lightgrey; width: 10px; height: 10px; display: inline-block;"></span> Fossitt: BL3	<span style="background-color: white; width: 10px; height: 10px; display: inline-block;"></span> Fossitt: ED1
<span style="background-color: lightorange; width: 10px; height: 10px; display: inline-block;"></span> Fossitt: ED2	<span style="background-color: lightblue; width: 10px; height: 10px; display: inline-block;"></span> Fossitt: FW2
<span style="background-color: lightblue; width: 10px; height: 10px; display: inline-block;"></span> Fossitt: FW4/WL2	<span style="background-color: lightgreen; width: 10px; height: 10px; display: inline-block;"></span> GA1
<span style="background-color: pink; width: 10px; height: 10px; display: inline-block;"></span> WD2	<span style="background-color: lightpurple; width: 10px; height: 10px; display: inline-block;"></span> WL1
<span style="background-color: purple; width: 10px; height: 10px; display: inline-block;"></span> WL2	<span style="background-color: lightpurple; width: 10px; height: 10px; display: inline-block;"></span> WS1
<span style="border: 2px solid orange; border-radius: 50%; width: 10px; height: 10px; display: inline-block;"></span> Badger sett exclusion zones	

Rev	Description	By	Date	Check	Auth
1	Final	FS	01/05/2026	EP	FS



Source: Google, 2025

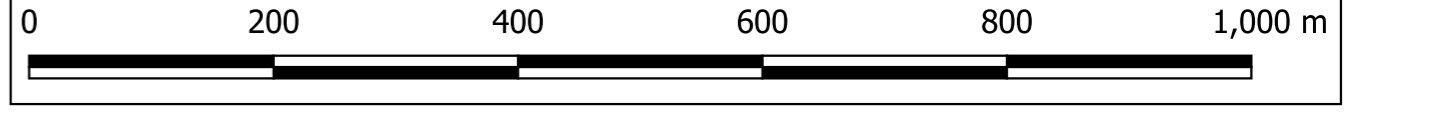


Project Name:  
 GAS TO BORD NA MONA, EDENDERRY

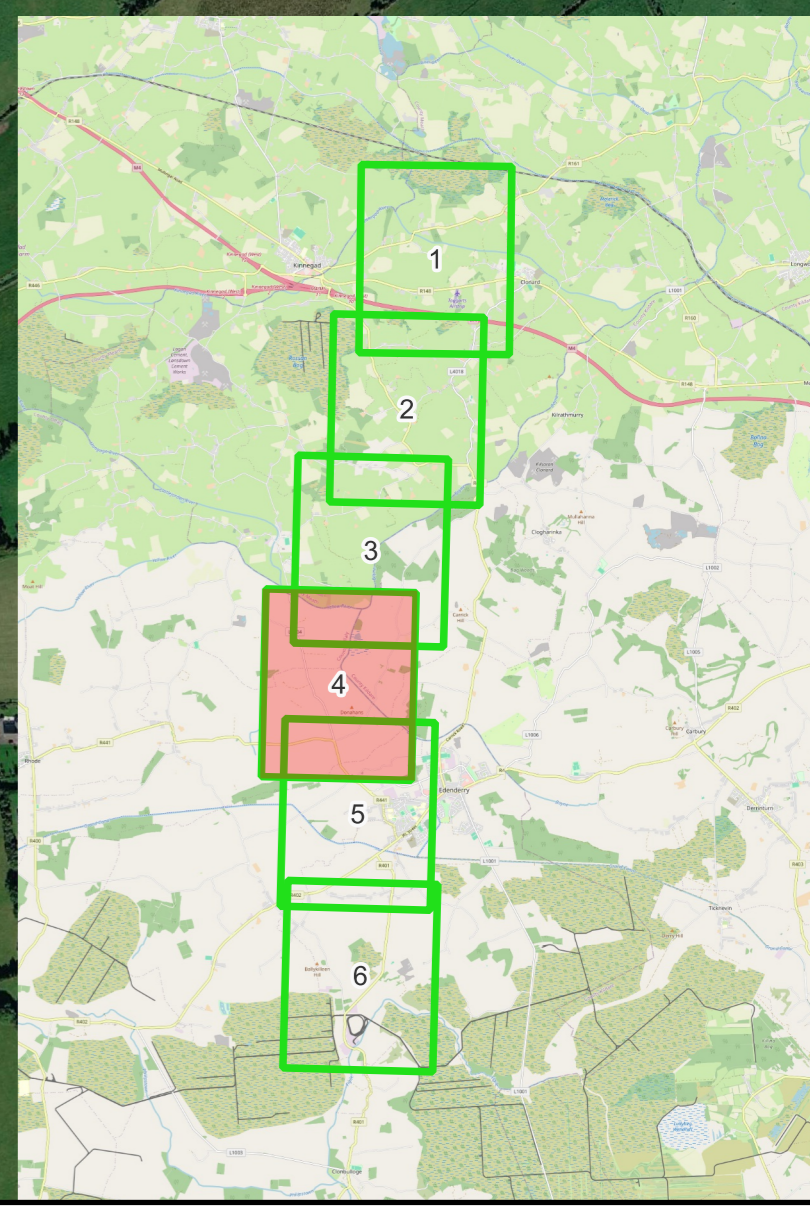
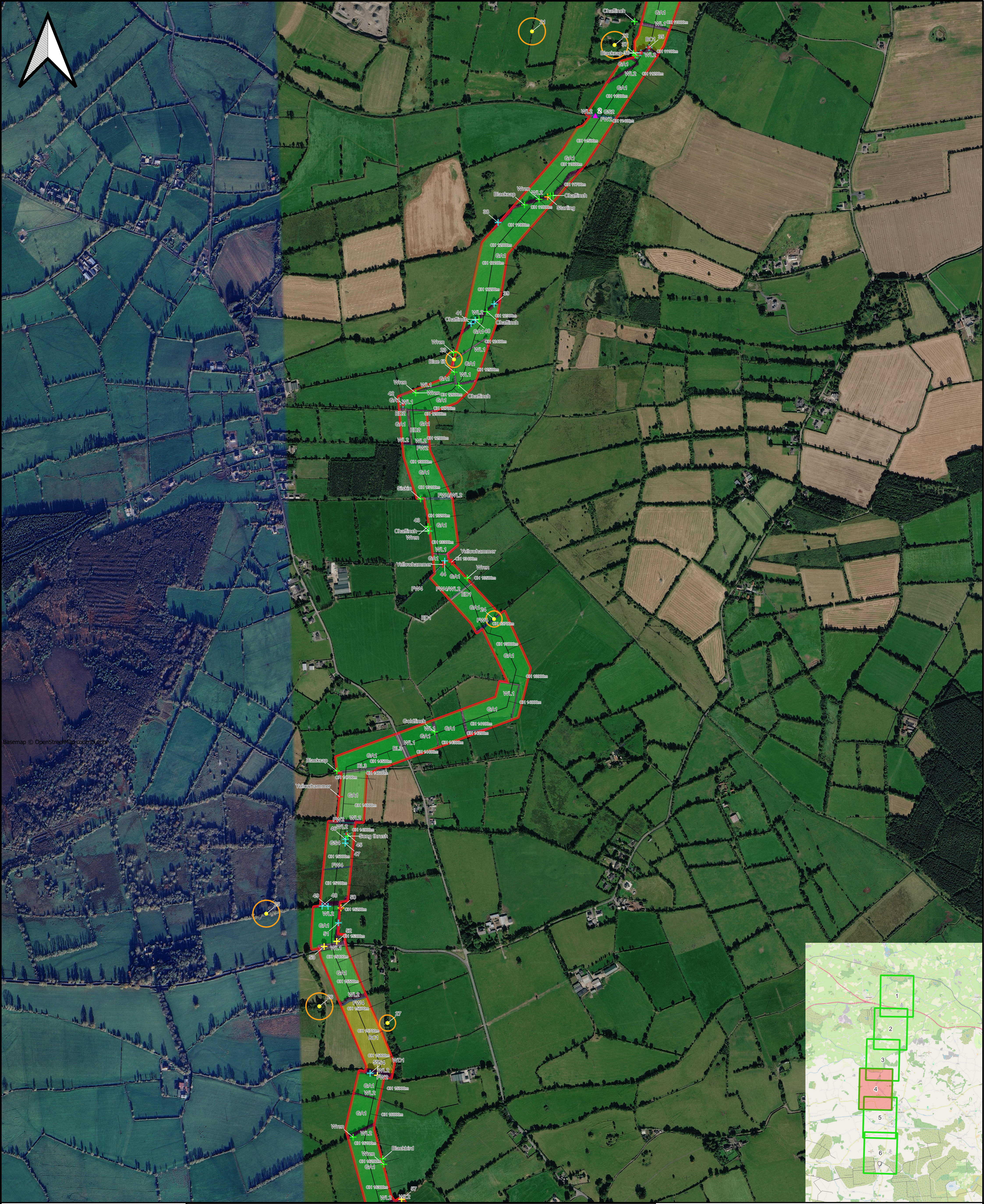
Drawing Title:  
 SENSITIVE ECOLOGICAL RECEPTORS IDENTIFIED DURING  
 ECOLOGY SURVEYS  
 SHEET 3 of 6

Legend	
<span style="border: 2px solid red; padding: 2px;"> </span> Proposed Development Site	<span style="color: blue;">+</span> Moderate
<span style="color: yellow;">●</span> Active badger setts	<span style="color: purple;">▲</span> Static bat detector locations
<span style="color: green;">+</span> Breeding bird evidence (BoCCI): Green	<span style="color: yellow;">+</span> Fossitt: BC1
<span style="color: orange;">+</span> Amber	<span style="background-color: grey; border: 1px solid grey; padding: 2px;"> </span> BL3
<span style="color: red;">*</span> Confirmed bat roosts	<span style="background-color: white; border: 1px solid grey; padding: 2px;"> </span> ED1
<span style="color: blue;">+</span> Trees of bat roosting potential: Low	<span style="background-color: lightblue; border: 1px solid lightblue; padding: 2px;"> </span> FW2
<span style="background-color: lightblue; border: 1px solid lightblue; padding: 2px;"> </span> Moderate	<span style="background-color: lightblue; border: 1px solid lightblue; padding: 2px;"> </span> FW2/WL2
<span style="background-color: lightblue; border: 1px solid lightblue; padding: 2px;"> </span> Proposed Pipeline Route	<span style="background-color: lightgreen; border: 1px solid lightgreen; padding: 2px;"> </span> GA1
<span style="background-color: lightgreen; border: 1px solid lightgreen; padding: 2px;"> </span> BC1	<span style="background-color: lightgreen; border: 1px solid lightgreen; padding: 2px;"> </span> GS2
<span style="background-color: lightgreen; border: 1px solid lightgreen; padding: 2px;"> </span> BL3	<span style="background-color: lightgreen; border: 1px solid lightgreen; padding: 2px;"> </span> WD2
<span style="background-color: lightgreen; border: 1px solid lightgreen; padding: 2px;"> </span> ED1	<span style="background-color: lightgreen; border: 1px solid lightgreen; padding: 2px;"> </span> WL1
<span style="background-color: lightgreen; border: 1px solid lightgreen; padding: 2px;"> </span> FW2	<span style="background-color: lightgreen; border: 1px solid lightgreen; padding: 2px;"> </span> WL2
<span style="background-color: lightgreen; border: 1px solid lightgreen; padding: 2px;"> </span> FW2/WL2	<span style="border: 2px solid orange; padding: 2px;"> </span> Badger sett exclusion zones

Rev	Description	By	Date	Check	Auth
1	Final	FS	01/05/2026	EP	FS



Source: Google, 2025

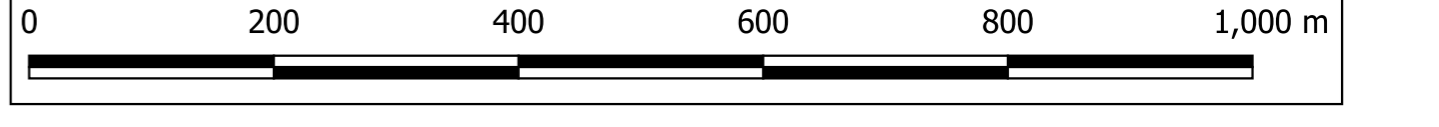


Project Name:  
GAS TO BORD NA MONA, EDENDERRY

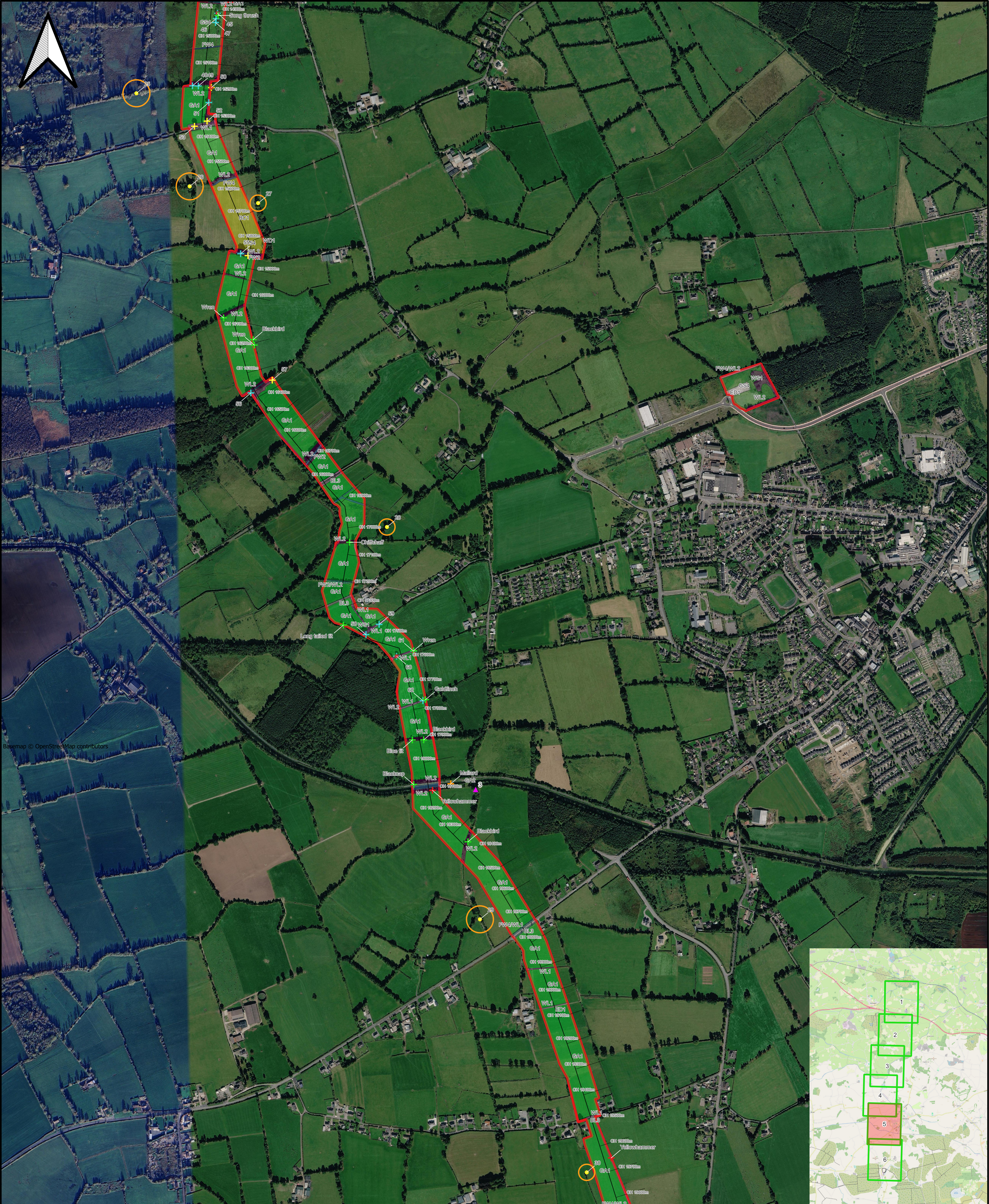
Drawing Title:  
SENSITIVE ECOLOGICAL RECEPTORS IDENTIFIED DURING ECOLOGY SURVEYS  
SHEET 4 of 6

Legend	
<span style="border: 2px solid red; padding: 2px;"> </span>	Proposed Development Site
<span style="color: yellow;">●</span>	Active badger sets
<span style="color: magenta;">▲</span>	Static bat detector locations
<span style="color: green;">+</span>	Green
<span style="color: orange;">+</span>	Amber
<span style="color: red;">+</span>	Red
<span style="color: red;">*</span>	Confirmed bat roosts
<span style="color: green;">+</span>	Trees of bat roosting potential:
<span style="color: lightgreen;">+</span>	Low
<span style="color: yellow;">+</span>	Moderate
<span style="color: grey;">—</span>	Proposed Pipeline Route
<span style="background-color: yellow; border: 1px solid black; padding: 2px;"> </span>	Fossitt: BC1
<span style="background-color: lightgrey; border: 1px solid black; padding: 2px;"> </span>	BL3
<span style="background-color: white; border: 1px solid black; padding: 2px;"> </span>	ED1
<span style="background-color: lightpink; border: 1px solid black; padding: 2px;"> </span>	ED2
<span style="background-color: lightblue; border: 1px solid black; padding: 2px;"> </span>	FW2
<span style="background-color: blue; border: 1px solid black; padding: 2px;"> </span>	FW4
<span style="background-color: lightblue; border: 1px solid black; padding: 2px;"> </span>	FW4/WL2
<span style="background-color: lightgreen; border: 1px solid black; padding: 2px;"> </span>	GA1
<span style="background-color: green; border: 1px solid black; padding: 2px;"> </span>	GS2
<span style="background-color: darkgreen; border: 1px solid black; padding: 2px;"> </span>	GS4
<span style="background-color: lightgreen; border: 1px solid black; padding: 2px;"> </span>	WD1
<span style="background-color: pink; border: 1px solid black; padding: 2px;"> </span>	WL1
<span style="background-color: purple; border: 1px solid black; padding: 2px;"> </span>	WL2
<span style="background-color: grey; border: 1px solid black; padding: 2px;"> </span>	WS1
<span style="border: 2px solid orange; padding: 2px;"> </span>	Badger sett exclusion zones

Rev	Description	By	Date	Check	Auth
1	Final	FS	01/05/2026	EP	FS



Source: Google, 2025



Basemap © OpenStreetMap contributors

Project Name:

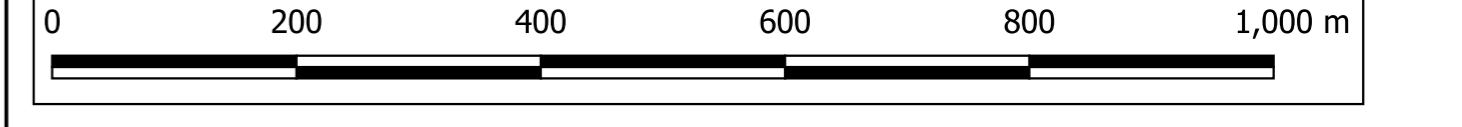
GAS TO BORD NA MONA, EDENDERRY

Drawing Title:

SENSITIVE ECOLOGICAL RECEPTORS IDENTIFIED DURING ECOLOGY SURVEYS SHEET 5 of 6

Legend	
<span style="border: 2px solid red; padding: 2px;"> </span>	Proposed Development Site
<span style="border-bottom: 2px solid blue; width: 20px; display: inline-block;"></span>	Proposed Pipeline Route
<span style="border: 1px solid orange; border-radius: 50%; width: 10px; height: 10px; display: inline-block;"></span>	Badger sett exclusion zones
<span style="color: yellow;">●</span>	Active badger setts
<span style="color: purple;">▲</span>	Static bat detector locations
<span style="color: green;">+</span>	Green
<span style="color: orange;">+</span>	Amber
<span style="color: red;">+</span>	Red
<span style="color: red;">*</span>	Confirmed bat roosts
<span style="color: green;">+</span>	Low
<span style="color: yellow;">+</span>	Moderate
<span style="background-color: yellow; width: 10px; height: 10px; display: inline-block;"></span>	BC1
<span style="background-color: grey; width: 10px; height: 10px; display: inline-block;"></span>	BL3
<span style="background-color: white; width: 10px; height: 10px; display: inline-block;"></span>	ED1
<span style="background-color: orange; width: 10px; height: 10px; display: inline-block;"></span>	ED3
<span style="background-color: cyan; width: 10px; height: 10px; display: inline-block;"></span>	FW2
<span style="background-color: lightblue; width: 10px; height: 10px; display: inline-block;"></span>	FW2/WL2
<span style="background-color: lightblue; width: 10px; height: 10px; display: inline-block;"></span>	FW3
<span style="background-color: lightblue; width: 10px; height: 10px; display: inline-block;"></span>	FW4
<span style="background-color: lightblue; width: 10px; height: 10px; display: inline-block;"></span>	FW4/WL1
<span style="background-color: lightblue; width: 10px; height: 10px; display: inline-block;"></span>	FW4/WL2
<span style="background-color: lightgreen; width: 10px; height: 10px; display: inline-block;"></span>	GA1
<span style="background-color: lightgreen; width: 10px; height: 10px; display: inline-block;"></span>	GA2
<span style="background-color: lightgreen; width: 10px; height: 10px; display: inline-block;"></span>	GS4
<span style="background-color: lightgreen; width: 10px; height: 10px; display: inline-block;"></span>	WD1
<span style="background-color: pink; width: 10px; height: 10px; display: inline-block;"></span>	WL1
<span style="background-color: pink; width: 10px; height: 10px; display: inline-block;"></span>	WL2
<span style="background-color: pink; width: 10px; height: 10px; display: inline-block;"></span>	WS1

Rev	Description	By	Date	Check	Auth
1	Final	FS	01/05/2026	EP	FS



Source: Google, 2025



Project Name:  
 GAS TO BORD NA MONA, EDENDERRY

Drawing Title:  
 SENSITIVE ECOLOGICAL RECEPTORS IDENTIFIED DURING  
 ECOLOGY SURVEYS  
 SHEET 6 of 6

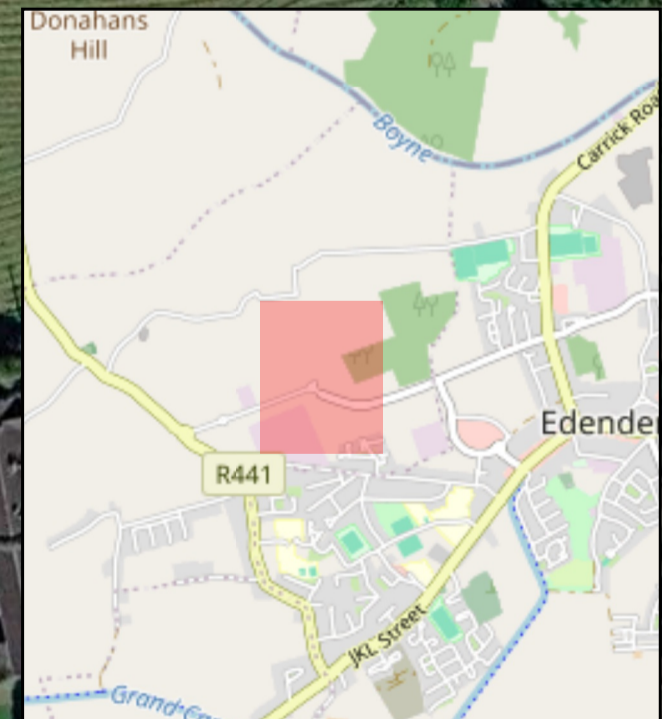
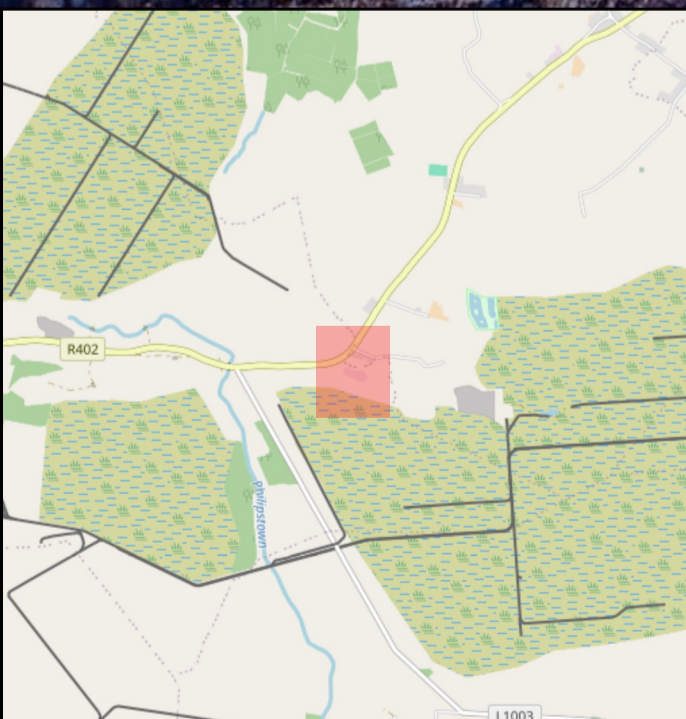
Legend

Proposed Development Site	BL3/ED1	GA2
Active badger setts	ED1	GS2
Breeding bird evidence (BoCCI): Green	ED3	GS4
Breeding bird evidence (BoCCI): Red	FW2	WL1
Trees of bat roosting potential: Low	FW2/WL2	WL2
Proposed Pipeline Route	FW4	WS1
Fossitt: BL3	FW4/WL1	WS1/ED3
	FW4/WL2	Badger sett exclusion zones
	GA1	

1	Final	FS	01/05/2026	EP	FS
Rev	Description	By	Date	Check	Auth

0 200 400 600 800 1,000 m

Source: Google, 2025



**Legend**

Red outline	EIAR Boundary	Light blue	ED1/ED3	Light green	FW4/WL1	Pink	WD2
Yellow	BC1	Light blue	ED2	Light green	FW4/WL2	Pink	WL1
Orange	BL2/WS1	Light blue	ED3	Light green	FW2	Pink	WS1
Light blue	BL3	Light blue	FW2/WL2	Light green	FW3	Pink	WS1/ED3
Light blue	BL3/ED1	Light blue	FW3	Light green	FW4	Yellow circle	Badger sett numbers 2026
Light blue	ED1	Light blue	FW4	Light green	Light green	Orange outline	Sett exclusion zones (2)
		Light green	GS4	Light green	Light green		
		Light green	WD1				

