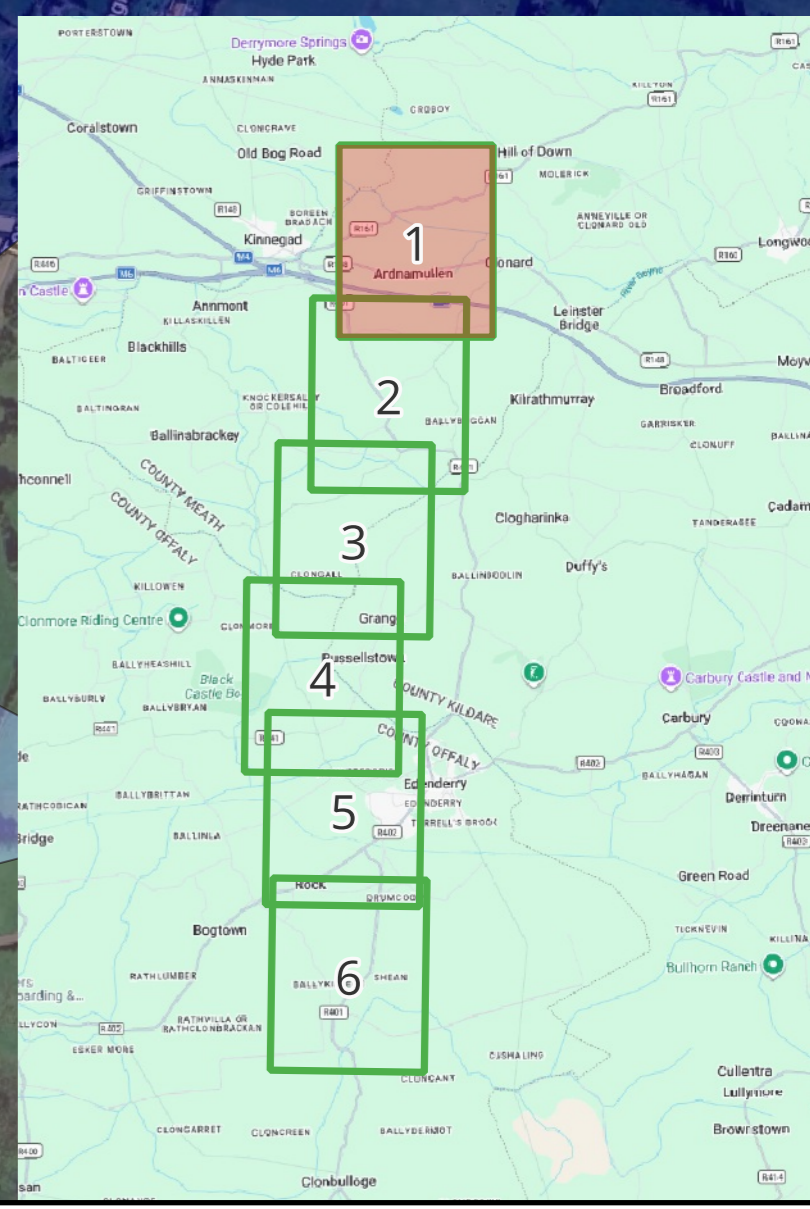
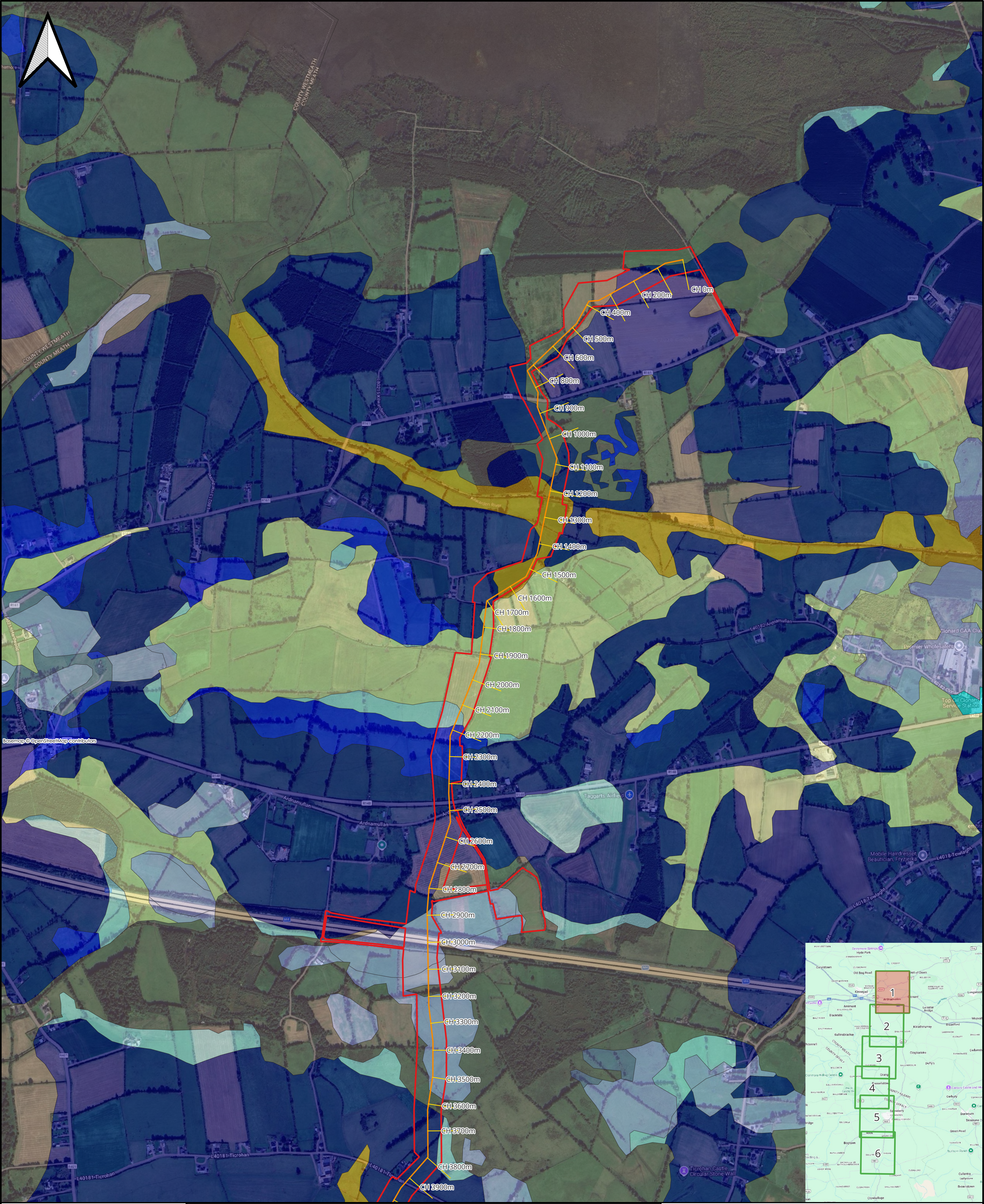




Figure 5-1 Teagasc Soils



Project Name:
**GAS TO BORD NA MONA,
 EDENDERRY**

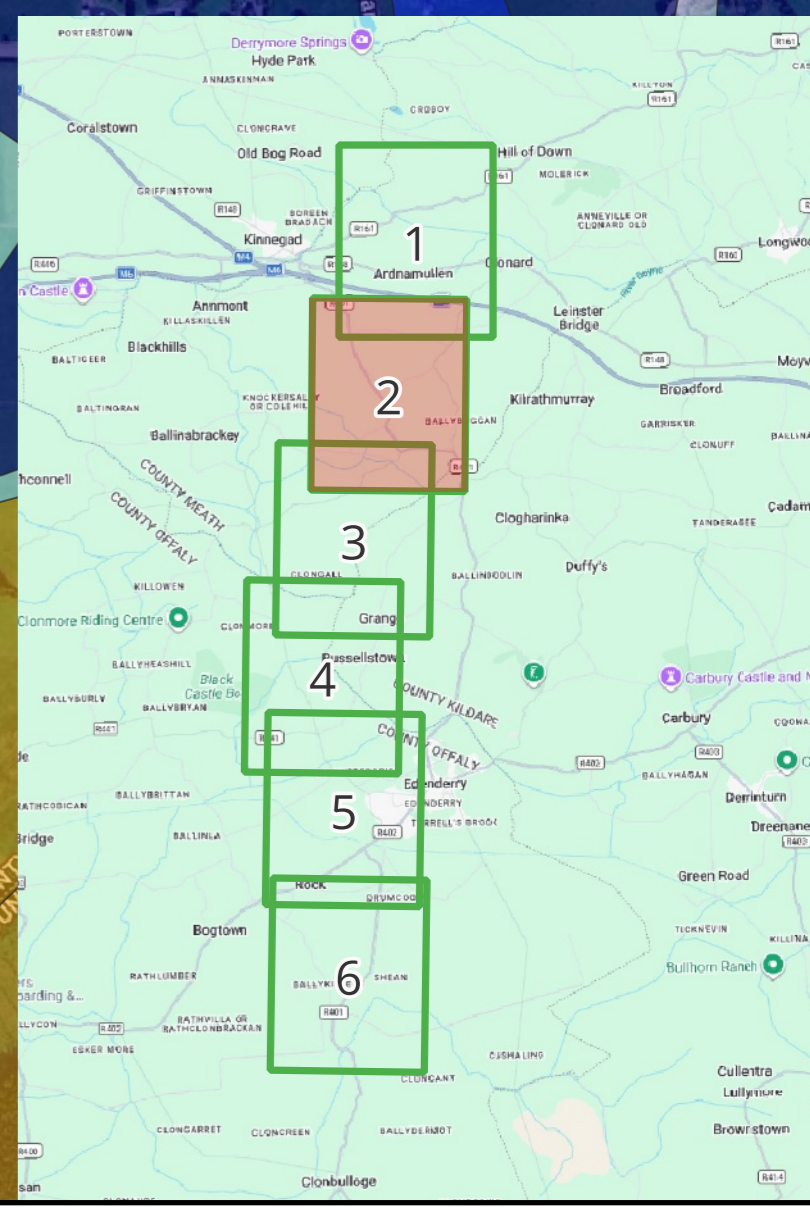
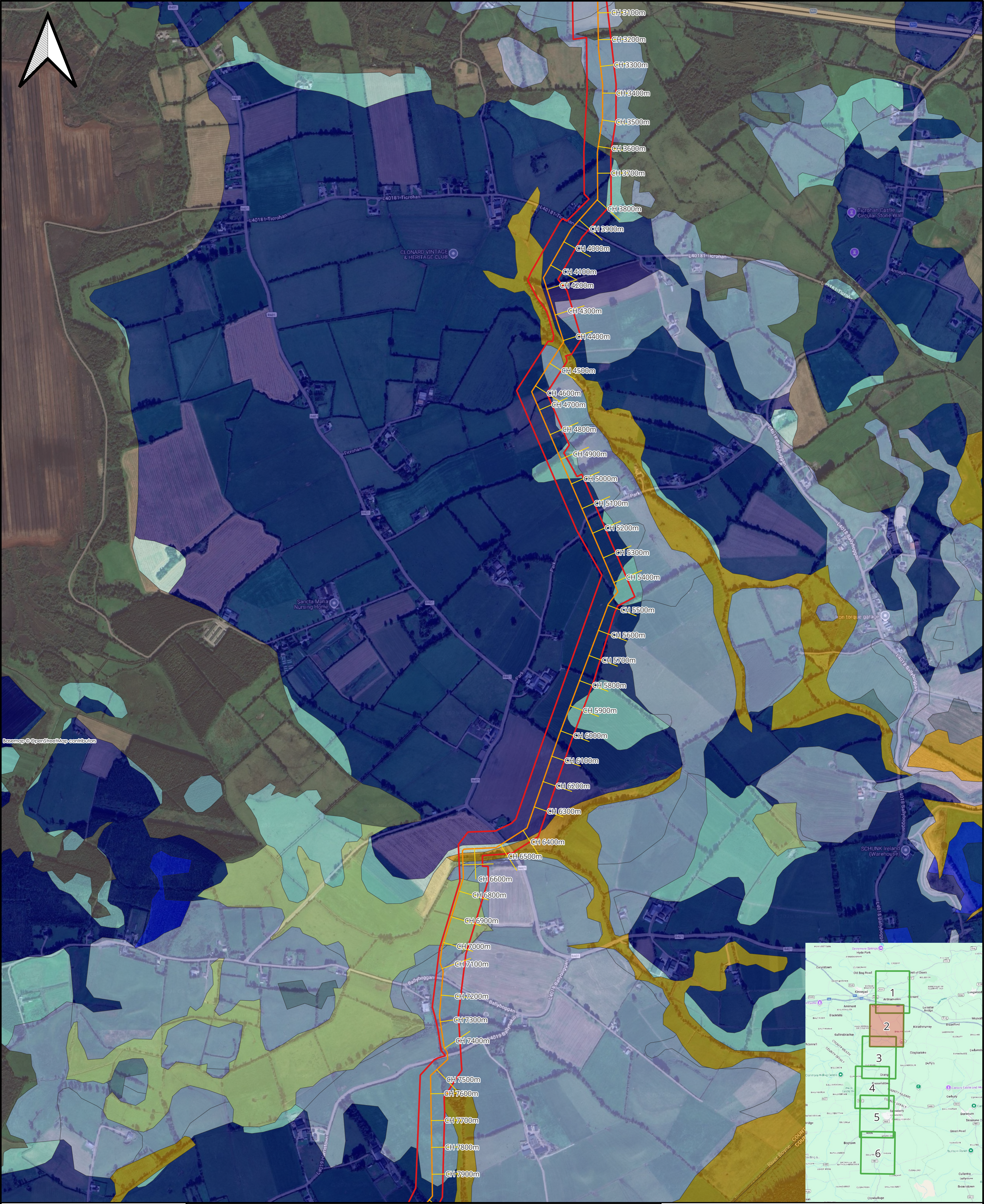
Drawing Title:
**TEAGASC SOILS
 SHEET 1 of 6**

Edenderry Pipeline		Teagasc Soils	
	Redline Boundary		AlluvMIN - Alluvial (mineral)
	Pipeline Route		BminDW - Deep well drained mineral (Mainly basic)
	Chainage		BminPD - Mineral poorly drained (Mainly basic)
	BminPDPT - Peaty poorly drained mineral (Mainly basic)		Cut - Cutover/cutaway peat
	BminSP - Shallow poorly drained mineral (Mainly basic)		Lac - Lacustrine type soils
	BminSRPT - Shallow, rocky, peaty/non-peaty mineral complexes (Mainly basic)		Made - Made ground
	BminSW - Shallow well drained mineral (Mainly basic)		

Rev	Description	By	Date	Check	Auth
0	For Information	RAS	12/04/2026	RAS	JG

0 200 400 600 800 1,000 m

Source: Google & GSI, 2025



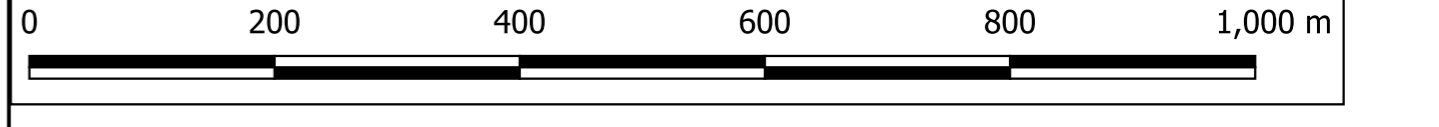
Project Name:
GAS TO BORD NA MONA,
EDENDERRY

Drawing Title:
TEAGASC SOILS
SHEET 2 of 6

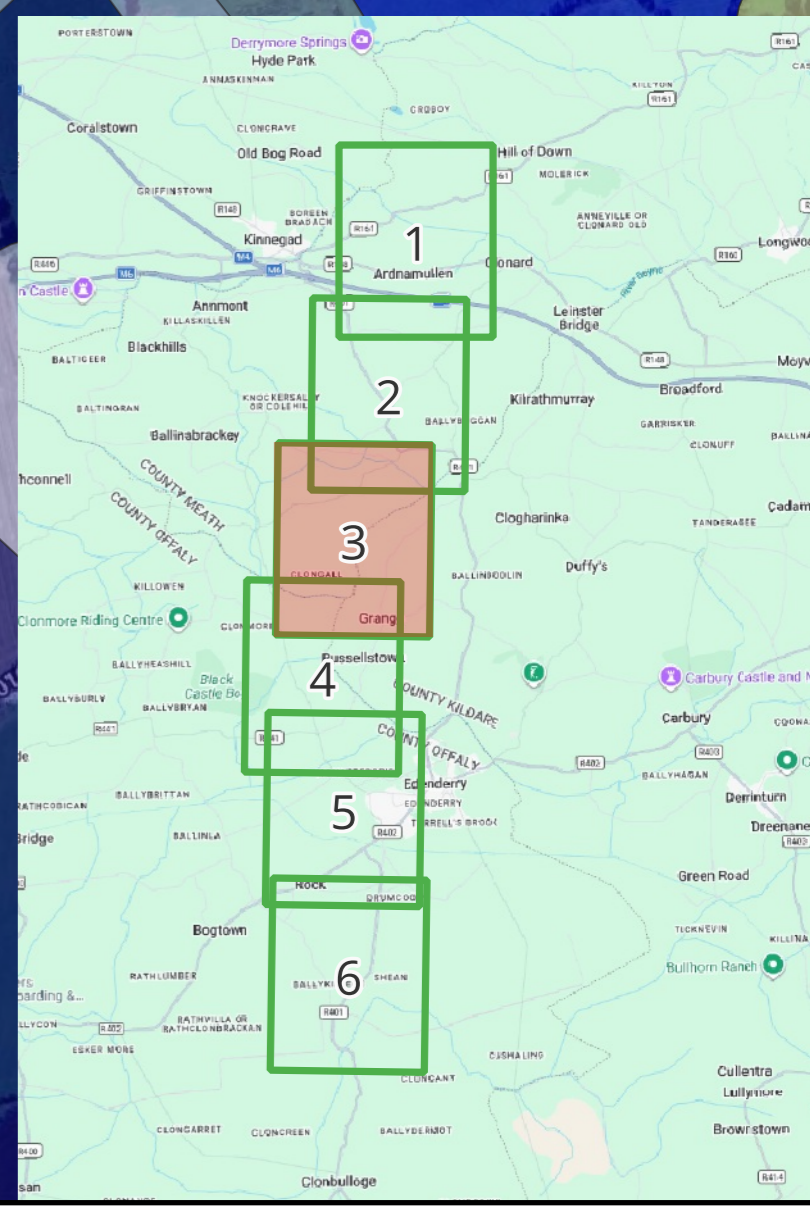
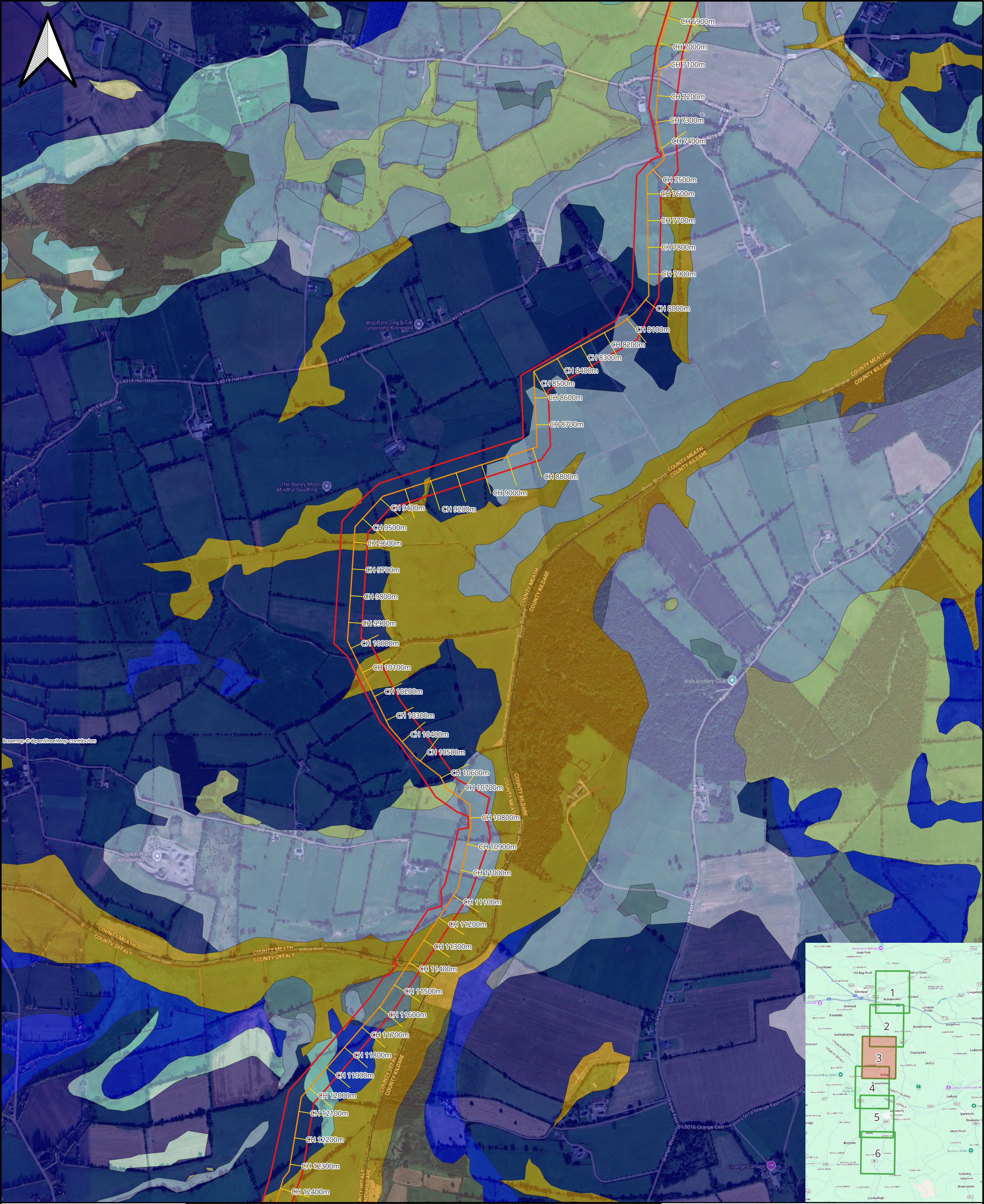
Legend

- Edenderry Pipeline**
- ▭ Redline Boundary
 - ▭ Pipeline Route
 - ▭ Chainage
- Teagasc Soils**
- ▭ AlluvMIN - Alluvial (mineral)
 - ▭ BminDW - Deep well drained mineral (Mainly basic)
 - ▭ BminPD - Mineral poorly drained (Mainly basic)
 - ▭ BminPDPT - Peaty poorly drained mineral (Mainly basic)
 - ▭ BminSP - Shallow poorly drained mineral (Mainly basic)
 - ▭ BminSRPT - Shallow, rocky, peaty/non-peatymineral complexes (Mainly basic)
 - ▭ BminSW - Shallow well drained mineral (Mainly basic)
 - ▭ Cut - Cutover/cutaway peat
 - ▭ Lac - Lacustrine type soils

0	For Information	RAS	12/04/2026	RAS	JG
Rev	Description	By	Date	Check	Auth



Source: Google & GSI, 2025



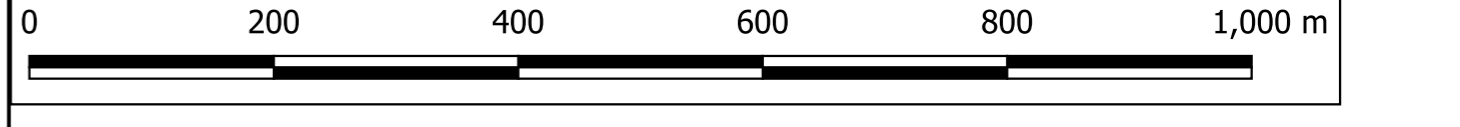
Project Name:
**GAS TO BORD NA MONA,
 EDENDERRY**

Drawing Title:
**TEAGASC SOILS
 SHEET 3 of 6**

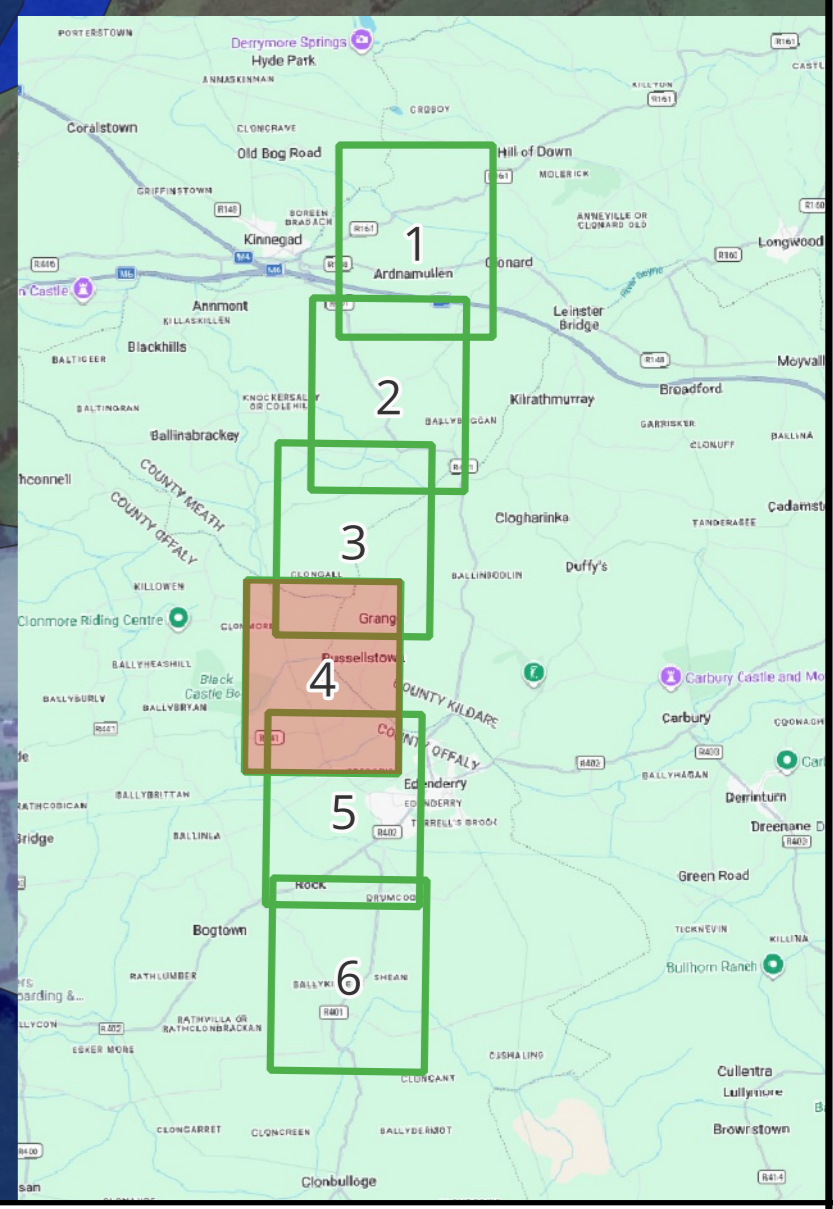
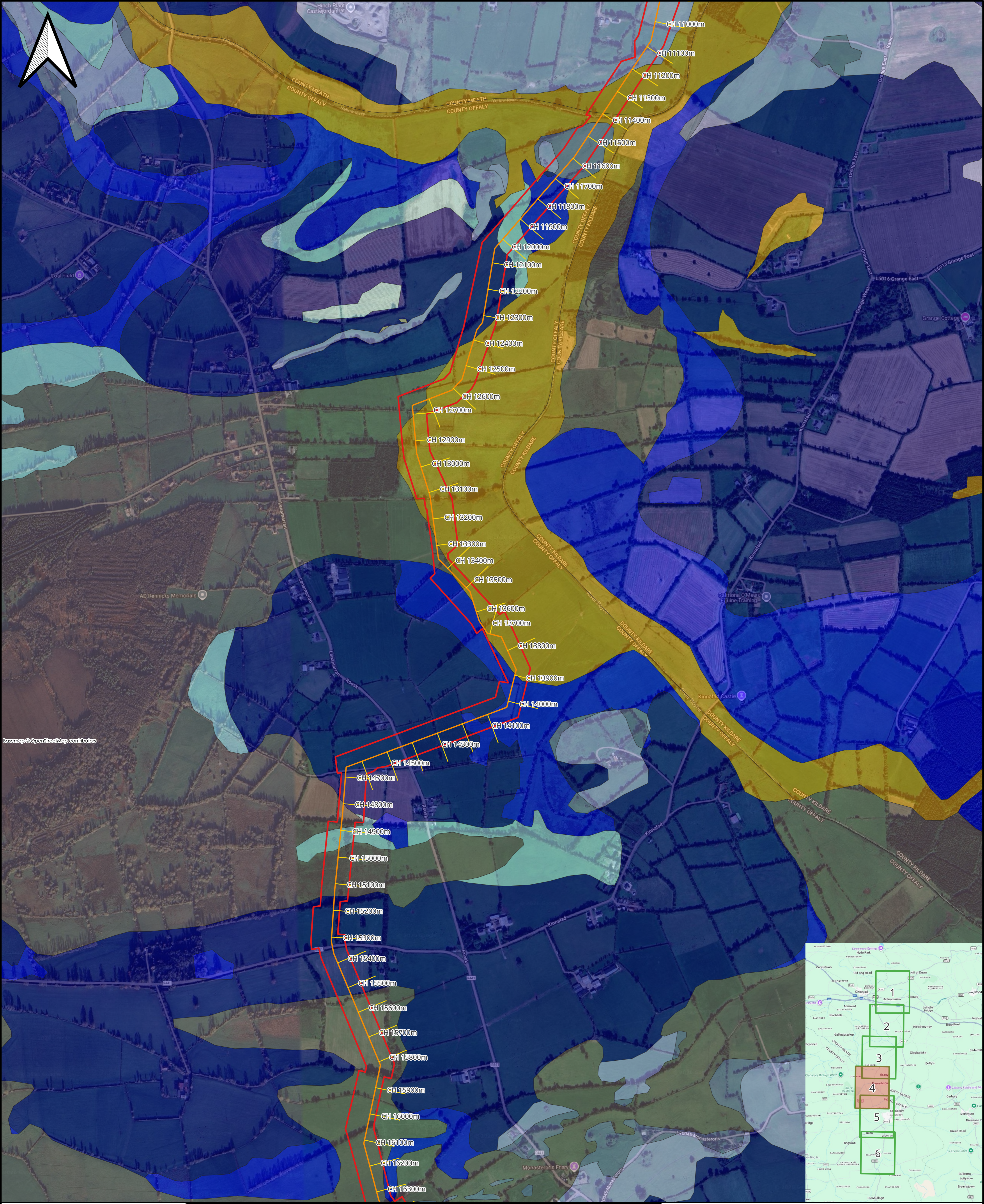
Legend

- Redline Boundary
- Pipeline Route
- Chainage
- Teagasc Soils**
- AlluvMIN - Alluvial (mineral)
- BminDW - Deep well drained mineral (Mainly basic)
- BminPD - Mineral poorly drained (Mainly basic)
- BminPDPT - Peaty poorly drained mineral (Mainly basic)
- BminSP - Shallow poorly drained mineral (Mainly basic)
- BminSRPT - Shallow, rocky, peaty/non-peatymineral complexes (Mainly basic)
- BminSW - Shallow well drained mineral (Mainly basic)
- Cut - Cutover/cutaway peat
- Lac - Lacustrine type soils

0	For Information	RAS	12/04/2026	RAS	JG
Rev	Description	By	Date	Check	Auth



Source: Google & GSI, 2025



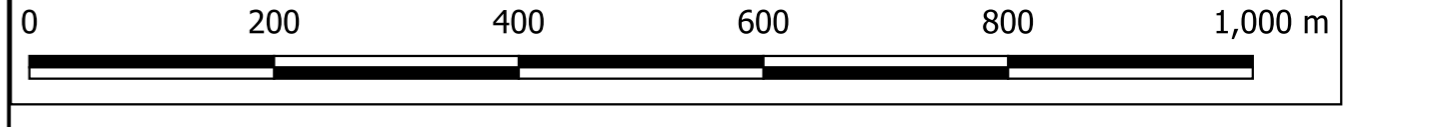
Project Name:
GAS TO BORD NA MONA,
EDENDERRY

Drawing Title:
TEAGASC SOILS
SHEET 4 of 6

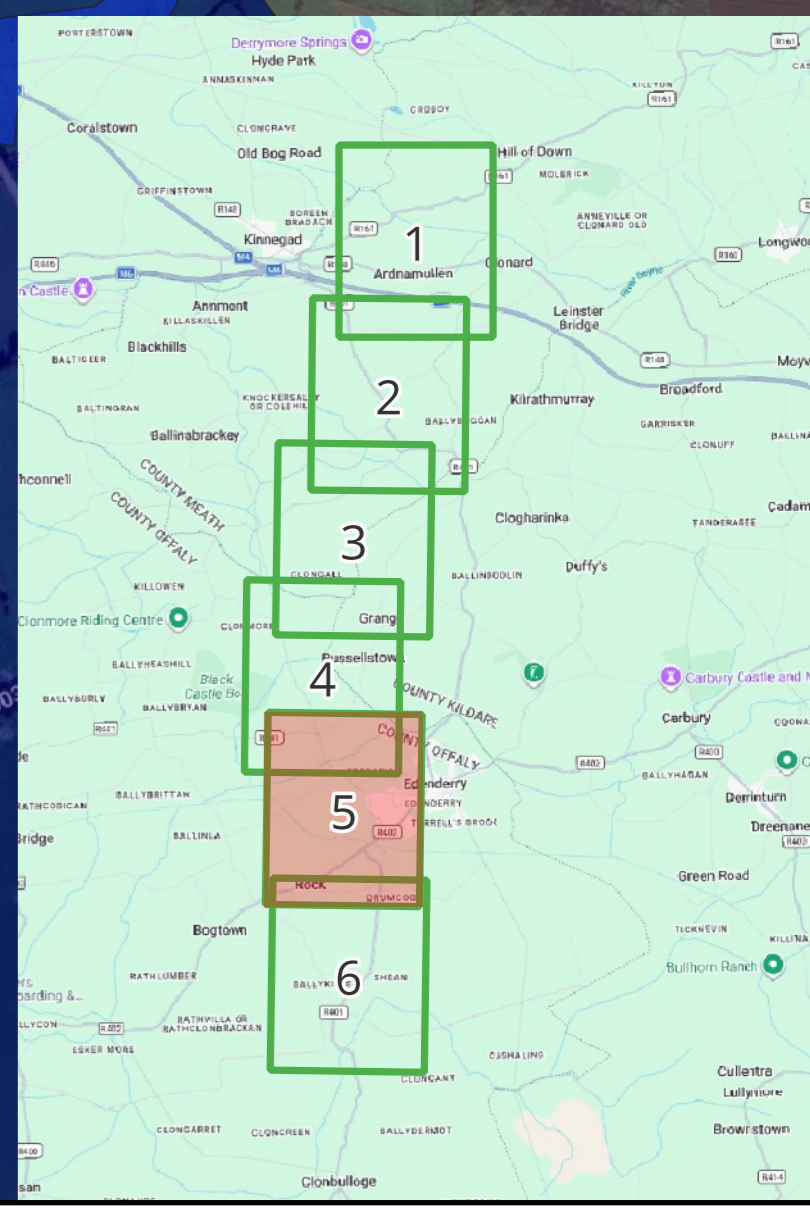
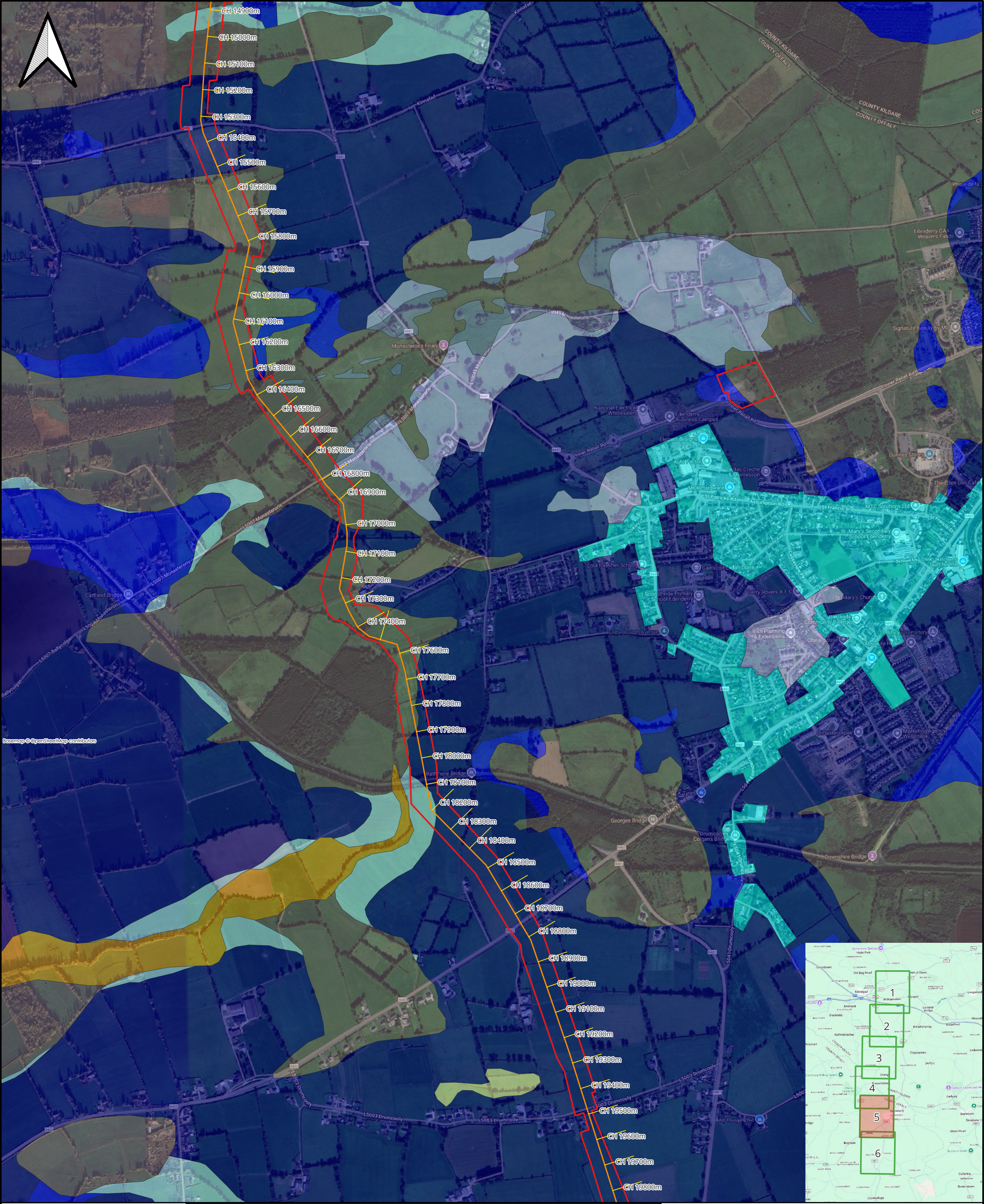
Legend

- Edenderry Pipeline**
- Redline Boundary
 - Pipeline Route
 - Chainage
- Teagasc Soils**
- AlluvMIN - Alluvial (mineral)
 - BminDW - Deep well drained mineral (Mainly basic)
 - BminPD - Mineral poorly drained (Mainly basic)
 - BminPDPT - Peaty poorly drained mineral (Mainly basic)
 - BminSP - Shallow poorly drained mineral (Mainly basic)
 - BminSRPT - Shallow, rocky, peaty/non-peaty mineral complexes (Mainly basic)
 - BminSW - Shallow well drained mineral (Mainly basic)
 - Cut - Cutover/cutaway peat
 - Lac - Lacustrine type soils

0	For Information	RAS	12/04/2026	RAS	JG
Rev	Description	By	Date	Check	Auth



Source: Google & GSI, 2025



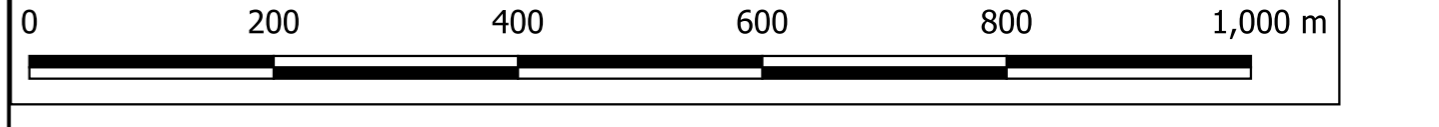
Project Name:
GAS TO BORD NA MONA,
EDENDERRY

Drawing Title:
TEAGASC SOILS
SHEET 5 of 6

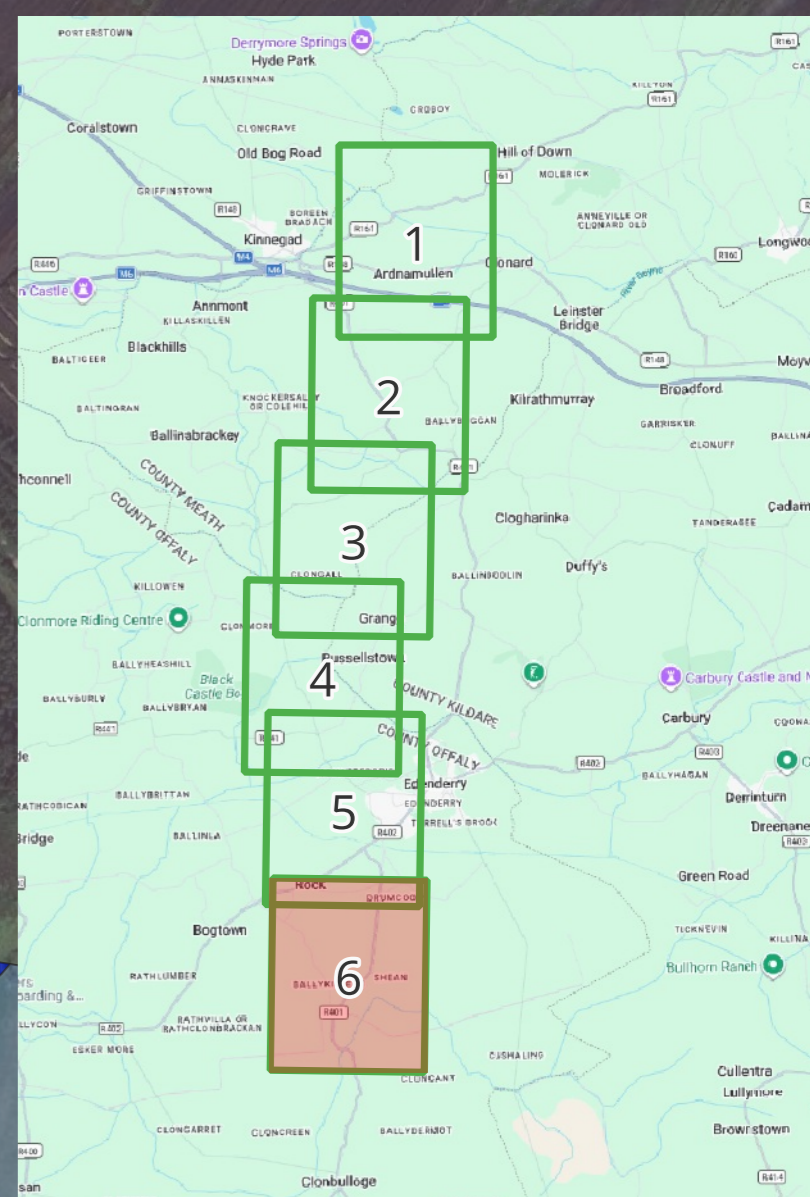
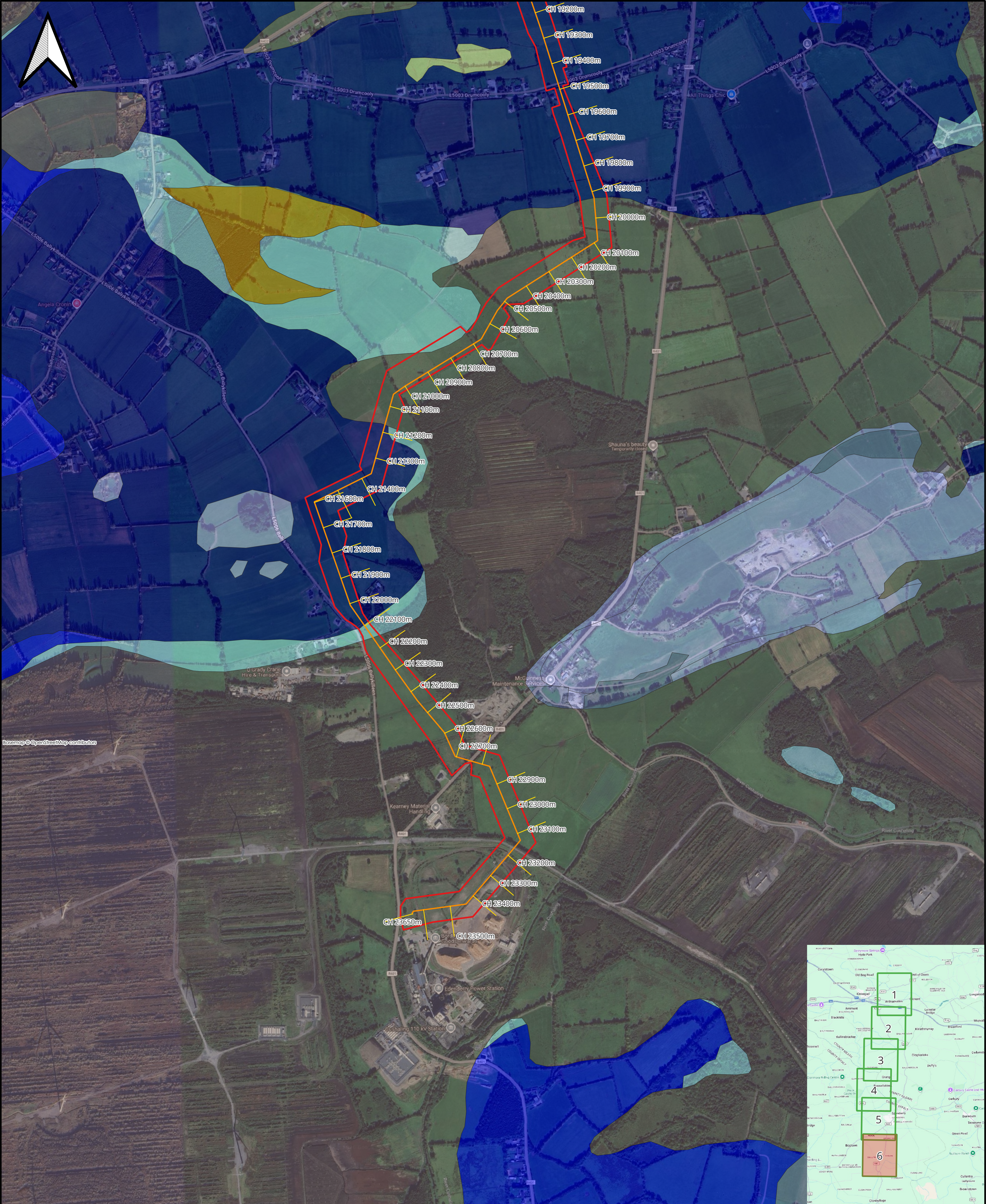
Legend

- Edenderry Pipeline Redline Boundary
- Pipeline Route
- Chainage
- Teagasc Soils**
- AlluvMIN - Alluvial (mineral)
- BminDW - Deep well drained mineral (Mainly basic)
- BminPD - Mineral poorly drained (Mainly basic)
- BminPDPT - Peaty poorly drained mineral (Mainly basic)
- BminSP - Shallow poorly drained mineral (Mainly basic)
- BminSW - Shallow well drained mineral (Mainly basic)
- Cut - Cutover/cutaway peat
- Lac - Lacustrine type soils
- Made - Made ground

Rev	Description	By	Date	Check	Auth
0	For Information	RAS	12/04/2026	RAS	JG



Source: Google & GSI, 2025



Project Name:

**GAS TO BORD NA MONA,
EDENDERRY**

Drawing Title:

**TEAGASC SOILS
SHEET 6 of 6**

Legend

- Edenderry Pipeline**
- ▬ Redline Boundary
 - ▬ Pipeline Route
 - ▬ Chainage
- Teagasc Soils**
- AlluvMIN - Alluvial (mineral)
 - BminDW - Deep well drained mineral (Mainly basic)
 - BminPD - Mineral poorly drained (Mainly basic)
 - BminPDPT - Peaty poorly drained mineral (Mainly basic)
 - BminSP - Shallow poorly drained mineral (Mainly basic)
 - BminSPPT - Shallow peaty poorly drained mineral (Mainly basic)
 - BminSRPT - Shallow, rocky, peaty/non-peaty mineral complexes (Mainly basic)
 - BminSW - Shallow well drained mineral (Mainly basic)
 - Cut - Cutover/cutaway peat
 - Lac - Lacustrine type soils

0	For Information	RAS	12/04/2026	RAS	JG
Rev	Description	By	Date	Check	Auth

Source: Google & GSI, 2025